

TOMAS.BSC

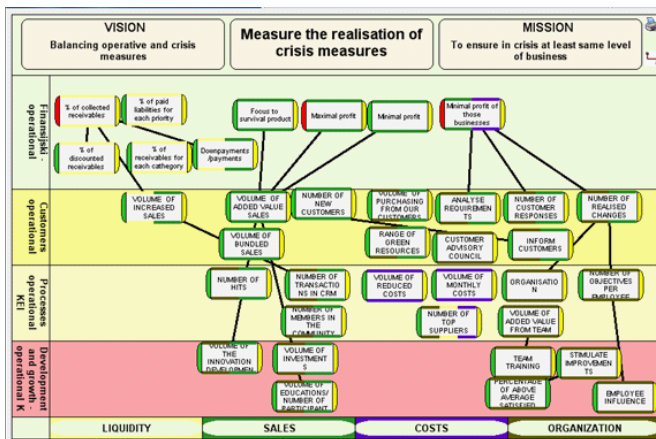
A perfect tool for strategic and operational management

An efficient information system for controlling managerial, especially strategic, information is of great importance for successful strategic management of a company. Such system periodically informs the management of a company and organizational units about deviations of strategic indicators from defined values.

Implement successfully your strategies

Cascade strategies from corporate level

- A clear strategic vision is not enough
- The company's strategic vision needs to be communicated and understood at every level of the organizational hierarchy. Top management is no longer solely responsible for a company's organizational strategy; strategy implementation is everyone's job
- Balanced scorecard can show how a company's organizational strategy can cascade from corporate levels, to business units and to employees' level ultimately. In that way, allowing employees to clearly understand their role or contribution to attaining their employers' visions and missions, on a day to day business and what rewards they can expect.

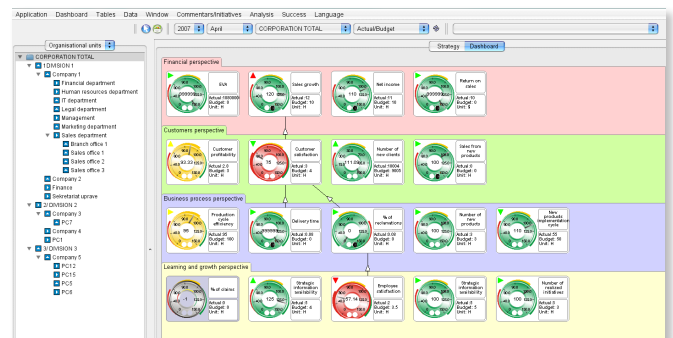


Research shows that only 10% of corporations reach the planned goals from the strategic plans alone.

Define measurable targets

What can't be measured can't be managed.

An efficient management system should develop matrices, collect and analyse data relative to the company's; (1) financial, (2) customer, (3) business process and (4) the learning and growth perspectives. Perftech.BSC can set targets for each of these four perspectives, so that vital measures are taken into consideration for early detection and direction. Therefore, employees will clearly understand what contribution is expected from them, they will also understand how they influence the realisation of targets in their respective units and the company as a whole. If the company's incentive system allows; employees can then see what form of monetary reward can be expected by their improved performance.

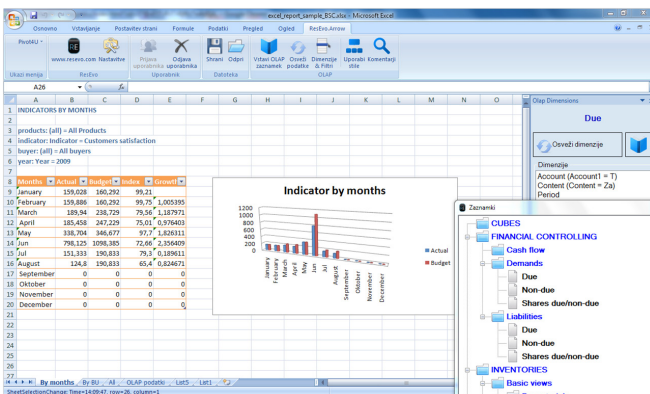
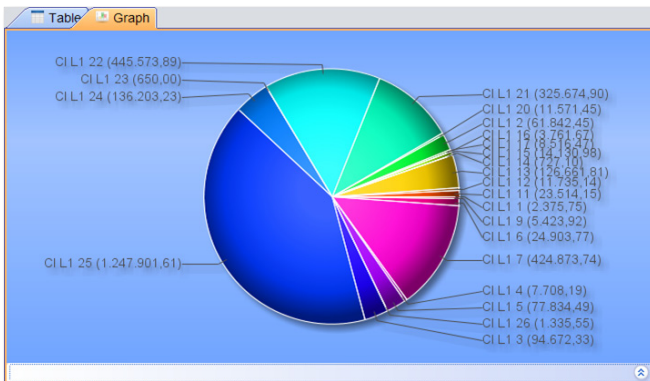
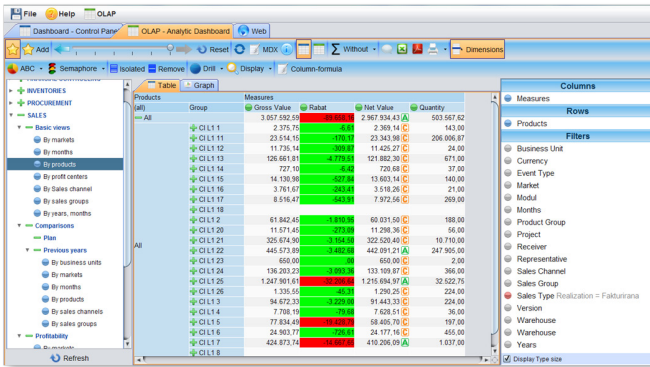


- Transfer complete strategic book into TOMAS.BSC
- Define the mission and vision of the company
- Perform SWOT analysis for the company and business units
- Define strategic objectives and set actions to achieve strategic goals
- Effectively communicate and deploy strategy throughout the entire company utilizing derived strategic objectives for business units, markets and products
- Set measurable targets for each business unit and link them to strategic objectives
- Attach documents on strategic objectives, activities, activities execution reports, etc.

- Create Initiatives to modify the objectives or change the approach
- Discover processes which need to be improved or redesigned
- Achieve a complete view on vital cause and effect relationship in your organization

Analyse data, automate report procedures

You can review and analyses data also through an optional OLAP multidimensional cube. Through our excel add-in you can automate Report preparation for KPI's.



Technical requirements:

Database server: Windows 2000, Windows NT, Pentium II 2 GHZ or higher, 2 GB RAM, hard disc 100 GB or more. SW: Oracle, MS SQL, Java Runtime Environment
 PC client: Windows 98 or higher, Pentium II 500 MHZ, 256 MB RAM, hard disc with at least 100 MB of free space, Java Runtime Environment-only administrators.

Use TOMAS.BSC for different performance methods

Use Tomas.BSC to implement and monitor different performance methods like Balanced score card, TQM, EFQM, 20 keys...)

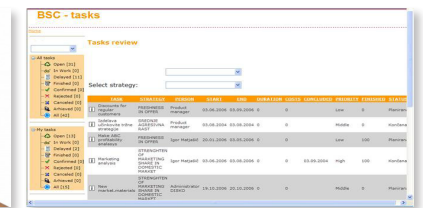
TOMAS CPM solution family www.pt-tomas.com

BSC is just one member of the big TOMAS family. Like Atoms build molecules, all TOMAS modules can work independently, yet linked together, exchanging data to form an integrated Corporate Performance Solution.

MIS - Management information system, BP - Business plan, Proces - Business process reengineering and ISO support, DM - Document management, Meeting - Meeting management, conclusions monitoring, Invest - Investment monitoring, Cori - Corrective measures, Report - Reports of group of companies, dislocated units... Cons Consolidation, Reclaim - Reclamations/claims management.

Access data from everywhere

Web or mobile interface allows you convenient access from everywhere.



Technical data

Application is developed in .net, administrative part in Java, Application is optimized for MS SQL or Oracle, Data can be received via Mobile service.

Applications are easily integrated with the company's existing database to compare targeted performances with actual results and historical data. The "Data Loading" option provides the administrator with options for loading data, either manually or automatically.